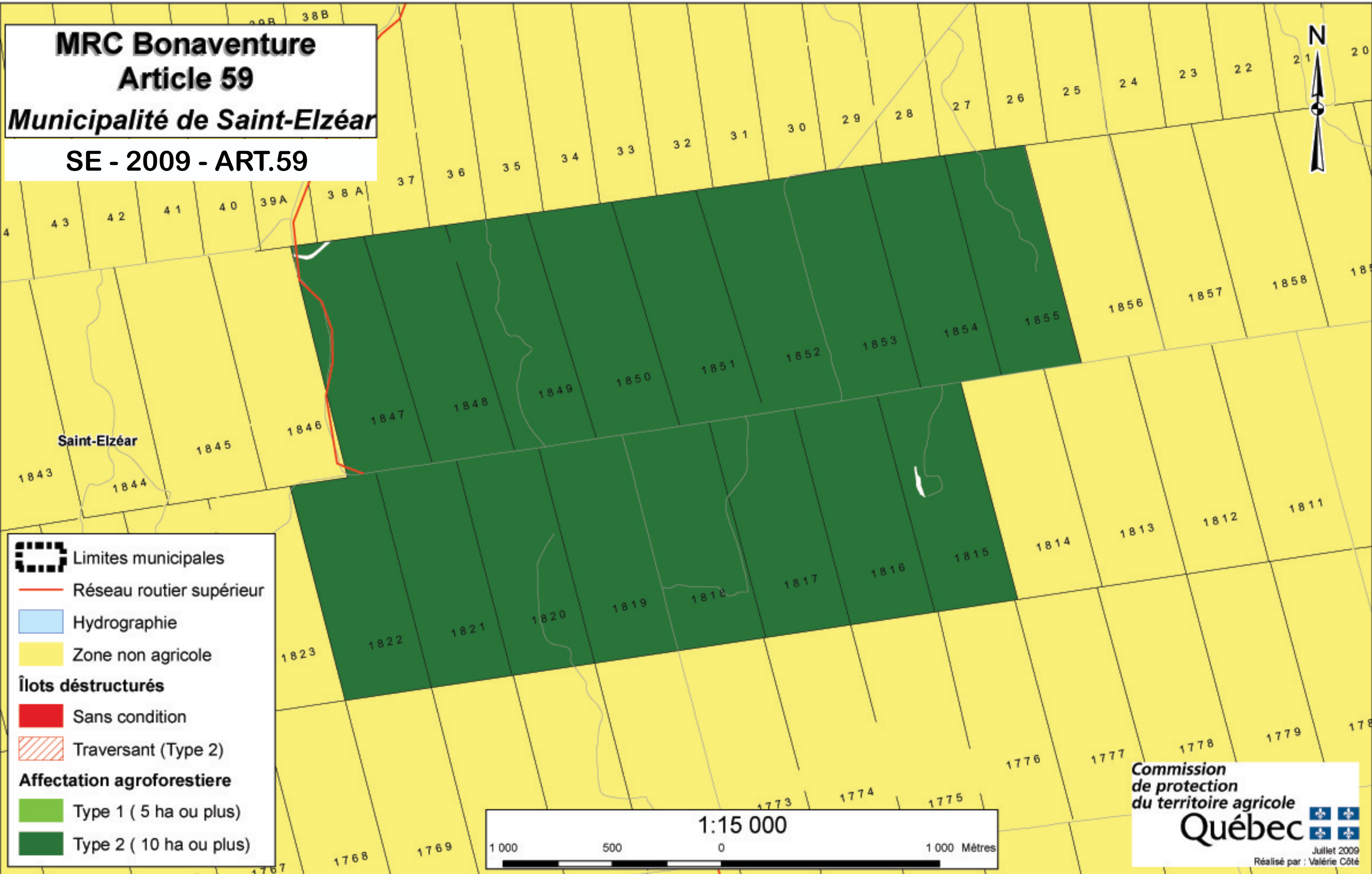







MRC Bonaventure
Article 59
Municipalité de Saint-Elzéar
SE - 2009 - ART.59



-  Limites municipales
-  Réseau routier supérieur
-  Hydrographie
-  Zone non agricole
- Îlots déstructurés**
-  Sans condition
-  Traversant (Type 2)
- Affectation agroforestière**
-  Type 1 (5 ha ou plus)
-  Type 2 (10 ha ou plus)

