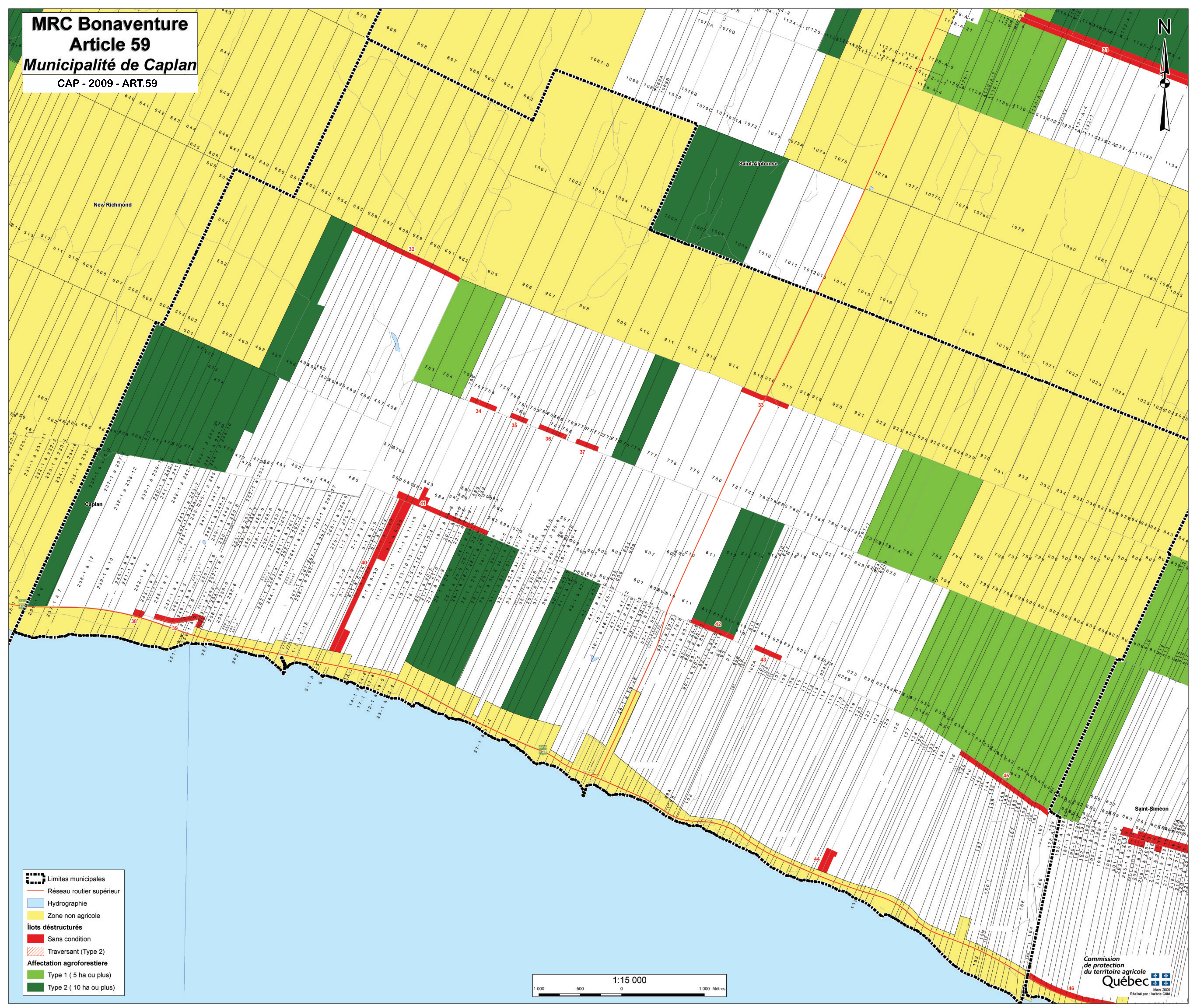










**MRC Bonaventure**  
**Article 59**  
**Municipalité de Caplan**  
 CAP - 2009 - ART.59



-  Limites municipales
-  Réseau routier supérieur
-  Hydrographie
-  Zone non agricole
- Îlots déstructurés**
-  Sans condition
-  Traversant (Type 2)
- Affectation agroforestière**
-  Type 1 ( 5 ha ou plus)
-  Type 2 ( 10 ha ou plus)

